



US008145241B2

(12) **United States Patent**  
**Singh et al.**

(10) **Patent No.:** **US 8,145,241 B2**  
(45) **Date of Patent:** **Mar. 27, 2012**

(54) **METHODS, SYSTEMS, AND COMPUTER PROGRAM PRODUCTS FOR ROLE- AND LOCALE-BASED MOBILE USER DEVICE FEATURE CONTROL**

(75) Inventors: **Munindar P. Singh**, Cary, NC (US);  
**Mona Singh**, Cary, NC (US)

(73) Assignee: **Armstrong, Quinton Co. LLC**,  
Wilmington, DE (US)

(\*) Notice: Subject to any disclaimer, the term of this patent is extended or adjusted under 35 U.S.C. 154(b) by 1697 days.

6,625,455	B1	9/2003	Ariga	
6,690,940	B1	2/2004	Brown et al.	
6,721,542	B1	4/2004	Anttila et al.	
6,738,572	B2	5/2004	Hunter	
6,823,199	B2	11/2004	Gough	
6,832,093	B1	12/2004	Ranta	
7,173,651	B1	2/2007	Knowles	
7,290,288	B2 *	10/2007	Gregg et al.	726/28
2001/0009855	A1	7/2001	I'Anson	
2001/0051534	A1	12/2001	Amin	
2002/0082002	A1	6/2002	Fujii	
2002/0094805	A1	7/2002	Yano et al.	
2002/0106202	A1	8/2002	Hunter	
2002/0107032	A1	8/2002	Agness et al.	
2002/0187818	A1	12/2002	Kang	

(Continued)

(21) Appl. No.: **11/172,595**

**FOREIGN PATENT DOCUMENTS**

(22) Filed: **Jun. 30, 2005**

JP 00-333266 11/2000  
(Continued)

(65) **Prior Publication Data**

US 2007/0004386 A1 Jan. 4, 2007

(51) **Int. Cl.**  
**H04W 24/00** (2009.01)

(52) **U.S. Cl.** ..... **455/456.5**; 455/422.1; 455/456.3;  
455/560; 455/456.1; 370/328

(58) **Field of Classification Search** ..... 455/456.1,  
455/422.1, 560, 550.1, 456.4, 456.2, 456.3,  
455/456.5, 414.1

See application file for complete search history.

(56) **References Cited**

**U.S. PATENT DOCUMENTS**

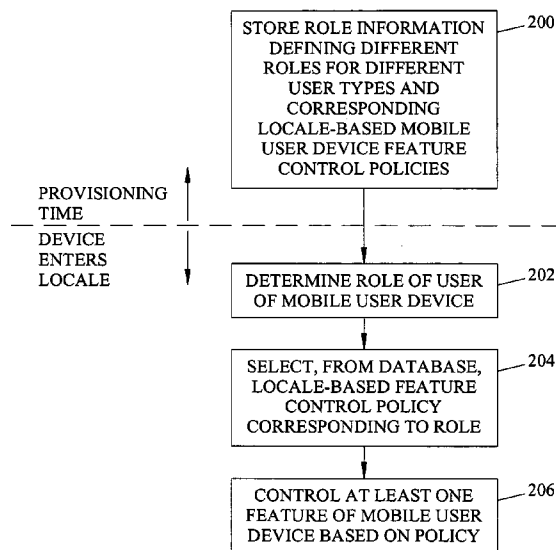
5,715,487	A	2/1998	McIntyre et al.
6,011,973	A	1/2000	Valentine et al.
6,085,096	A	7/2000	Nakamura
6,233,448	B1	5/2001	Alperovich et al.
6,256,503	B1	7/2001	Stephens
6,421,544	B1	7/2002	Sawada
6,522,352	B1	2/2003	Strandwitz et al.

*Primary Examiner* — Dwayne Bost  
*Assistant Examiner* — Inder P Mehra  
(74) *Attorney, Agent, or Firm* — Connolly Bove Lodge & Hutz LLP

(57) **ABSTRACT**

Methods, systems, and computer program products for role- and locale-based mobile user device feature control are disclosed. According to one aspect, a method for controlling at least one feature of a mobile user device based on a locale and a role of a user of the mobile user device is disclosed. The method includes storing, in a database, role information defining a plurality of different roles assigned to different user types and corresponding locale-based mobile user device feature control policies. In response to a mobile user device being within the locale, a role of the mobile user device is determined. A policy corresponding to the role is selected from a database. At least one feature of the mobile user device is controlled based on the locale-based feature control policy.

**35 Claims, 9 Drawing Sheets**



U.S. PATENT DOCUMENTS

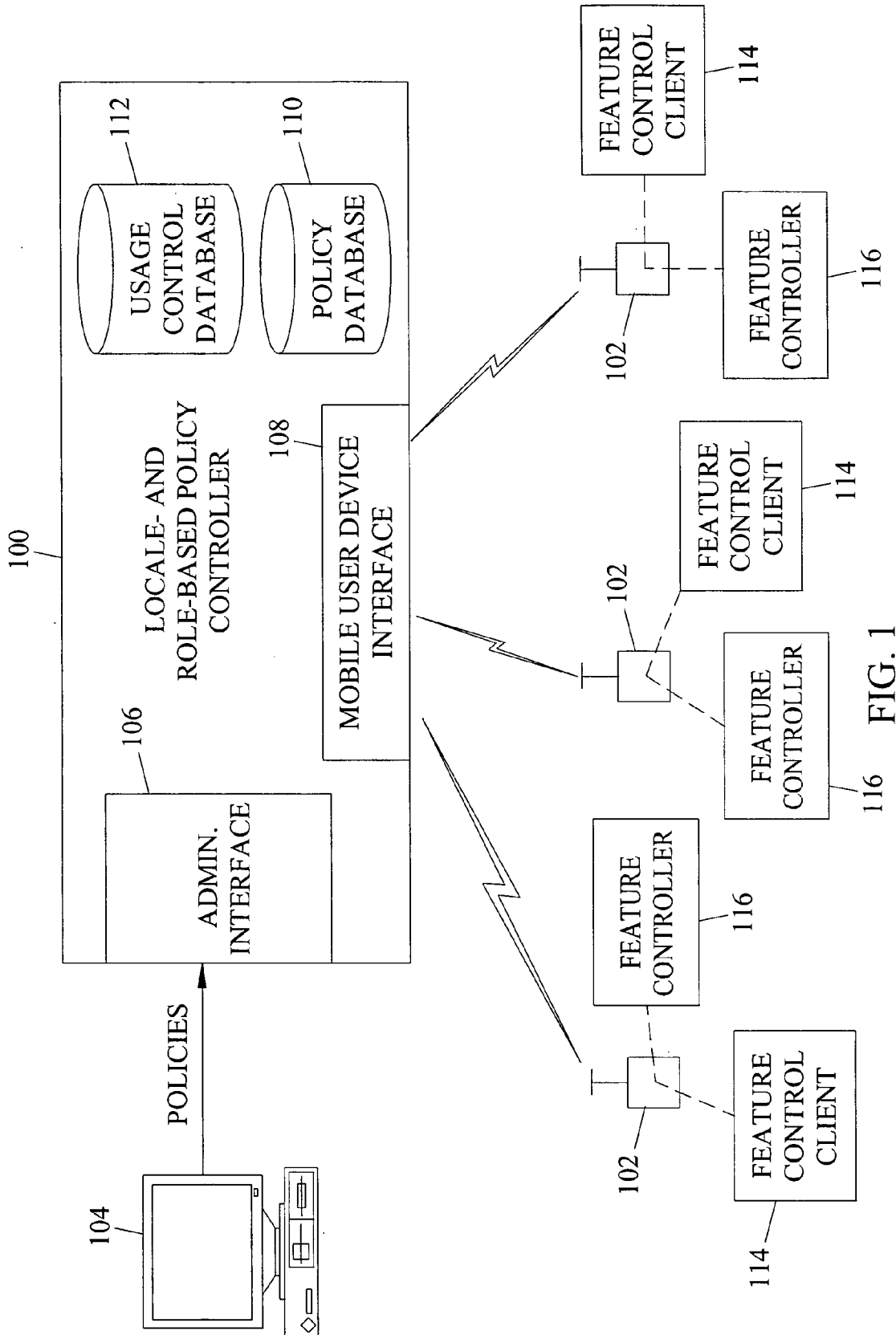
2003/0078076	A1	4/2003	Kuwajima et al.	
2003/0087631	A1	5/2003	Diachina et al.	
2003/0134627	A1	7/2003	Himmel et al.	
2003/0145228	A1	7/2003	Suuronen et al.	
2004/0070670	A1	4/2004	Foster	
2004/0087318	A1	5/2004	Lipovski	
2004/0147255	A1	7/2004	Lee	
2004/0166878	A1*	8/2004	Erskine et al.	455/456.1
2004/0203842	A1	10/2004	Hanninen et al.	
2004/0248597	A1*	12/2004	Mathis	455/466
2004/0255048	A1	12/2004	Lev Ran et al.	
2005/0007456	A1	1/2005	Lee et al.	
2005/0064856	A1	3/2005	Atkin et al.	
2005/0132048	A1*	6/2005	Kogan et al.	709/225
2005/0192038	A1	9/2005	Jeong	
2005/0256943	A1	11/2005	Morris	
2006/0009265	A1	1/2006	Clapper	
2006/0046714	A1*	3/2006	Kalavade	455/428
2006/0046746	A1*	3/2006	Ranford et al.	455/456.5
2006/0069756	A1	3/2006	Singh et al.	

2006/0094400	A1*	5/2006	Beachem et al.	455/410
2006/0094412	A1	5/2006	Nonoyama et al.	
2006/0156385	A1*	7/2006	Chiviendacz et al.	726/2
2006/0224742	A1*	10/2006	Shahbazi	709/226
2006/0234678	A1*	10/2006	Juitt et al.	455/411
2006/0265508	A1*	11/2006	Angel et al.	709/230
2006/0276200	A1*	12/2006	Radhakrishnan et al.	455/456.1
2008/0043689	A1*	2/2008	Walter	370/338
2008/0057977	A1*	3/2008	Shostak	455/456.1
2008/0288330	A1*	11/2008	Hildebrand et al.	705/10

FOREIGN PATENT DOCUMENTS

JP	04-120530	4/2004
WO	WO 97/49255	12/1996
WO	WO 98/00809	1/1998
WO	WO 00/67204	11/2000
WO	WO 01/67748	9/2001
WO	WO 02/01864	1/2002
WO	WO 02/054200	7/2002
WO	WO 2004/029836	4/2004

\* cited by examiner



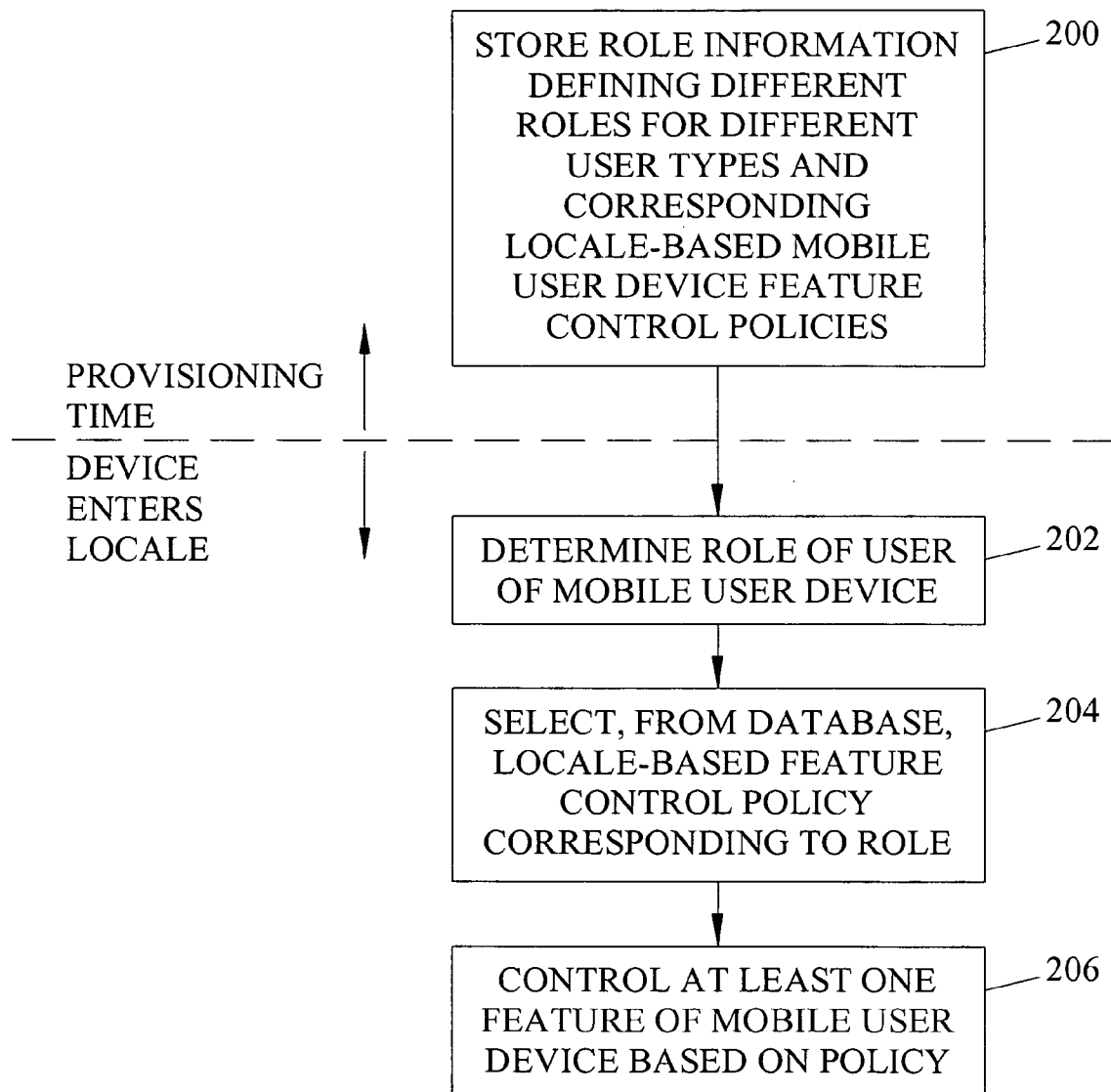


FIG.2A

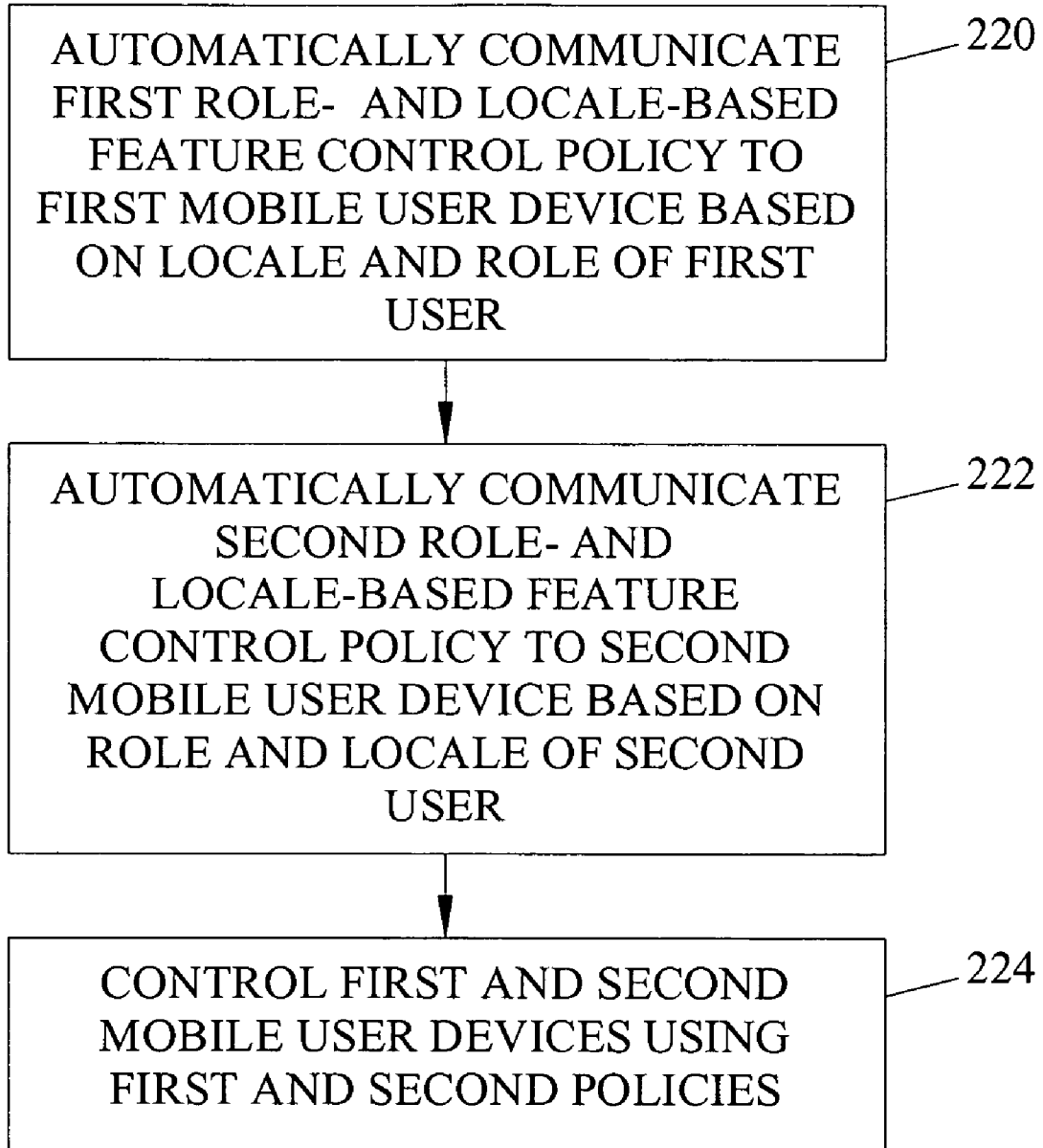


FIG.2B

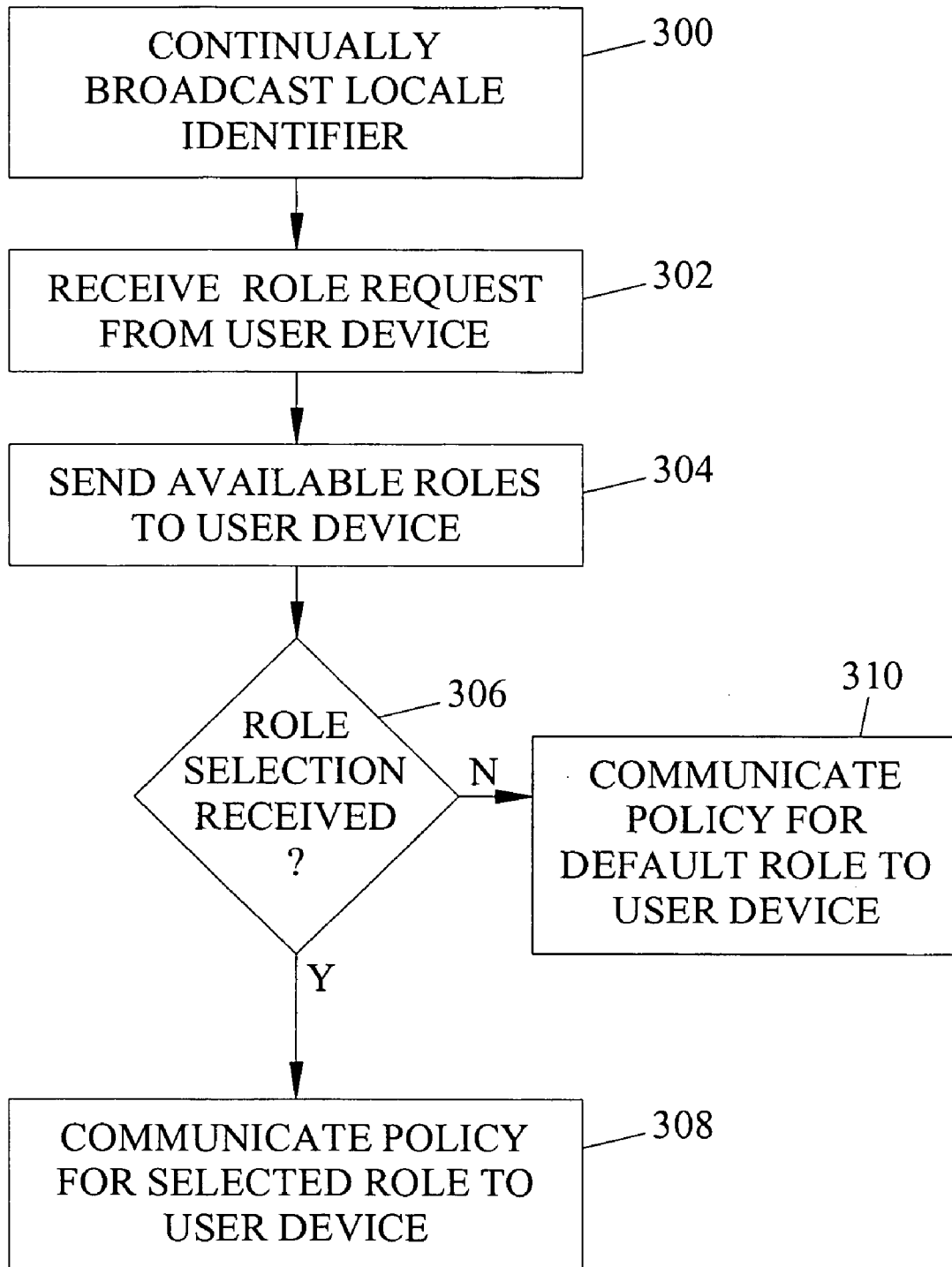


FIG. 3A

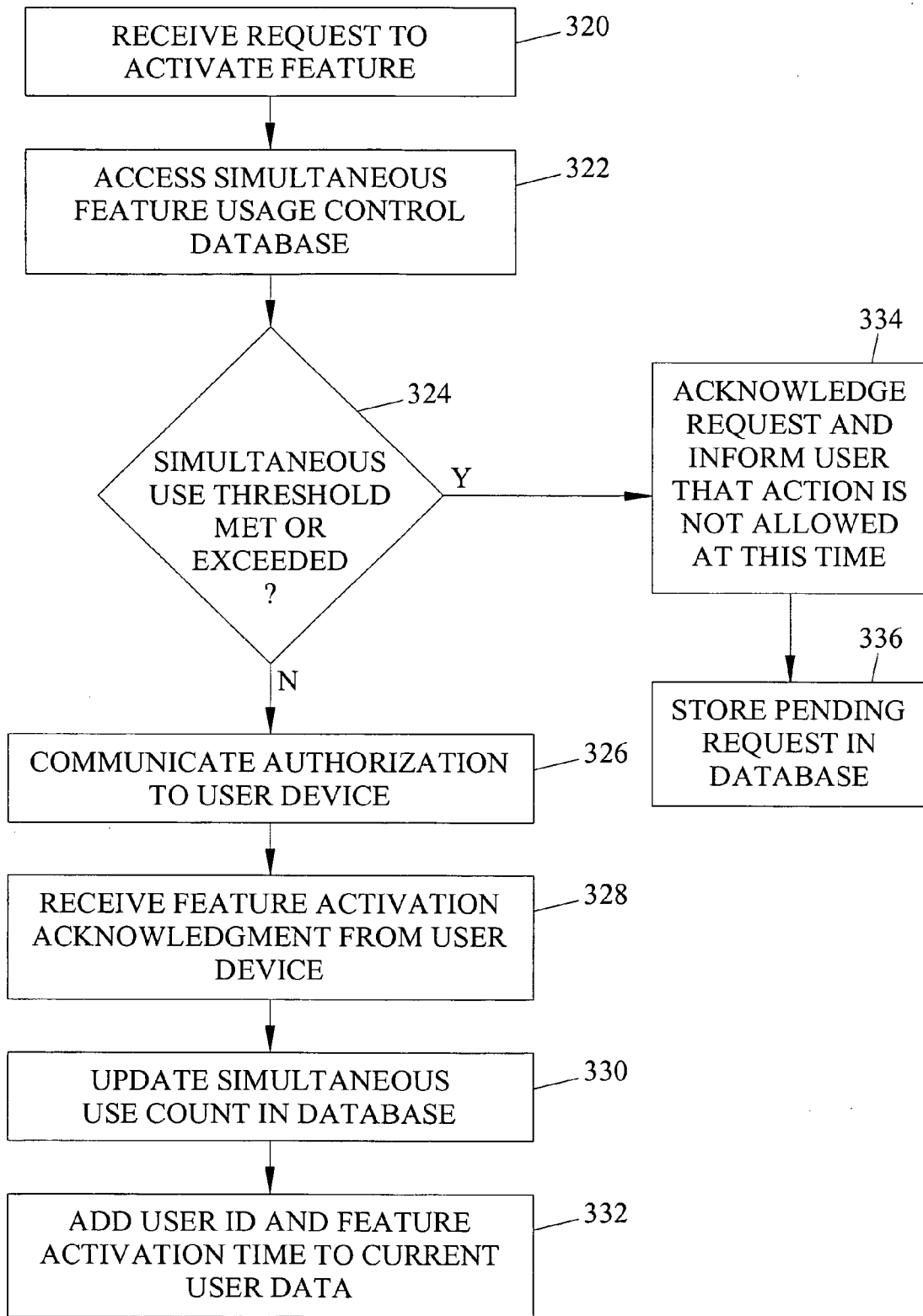


FIG. 3B

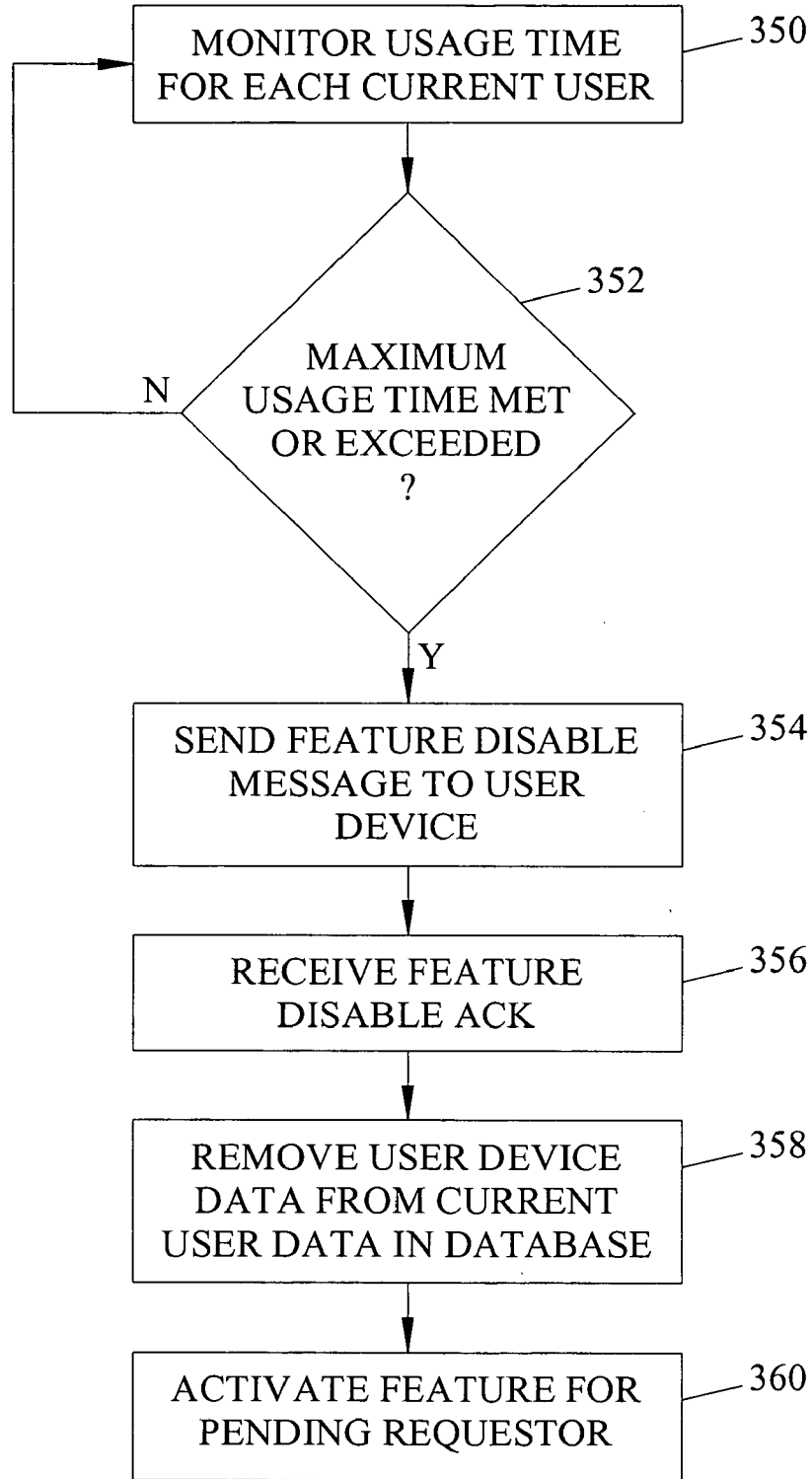


FIG. 3C



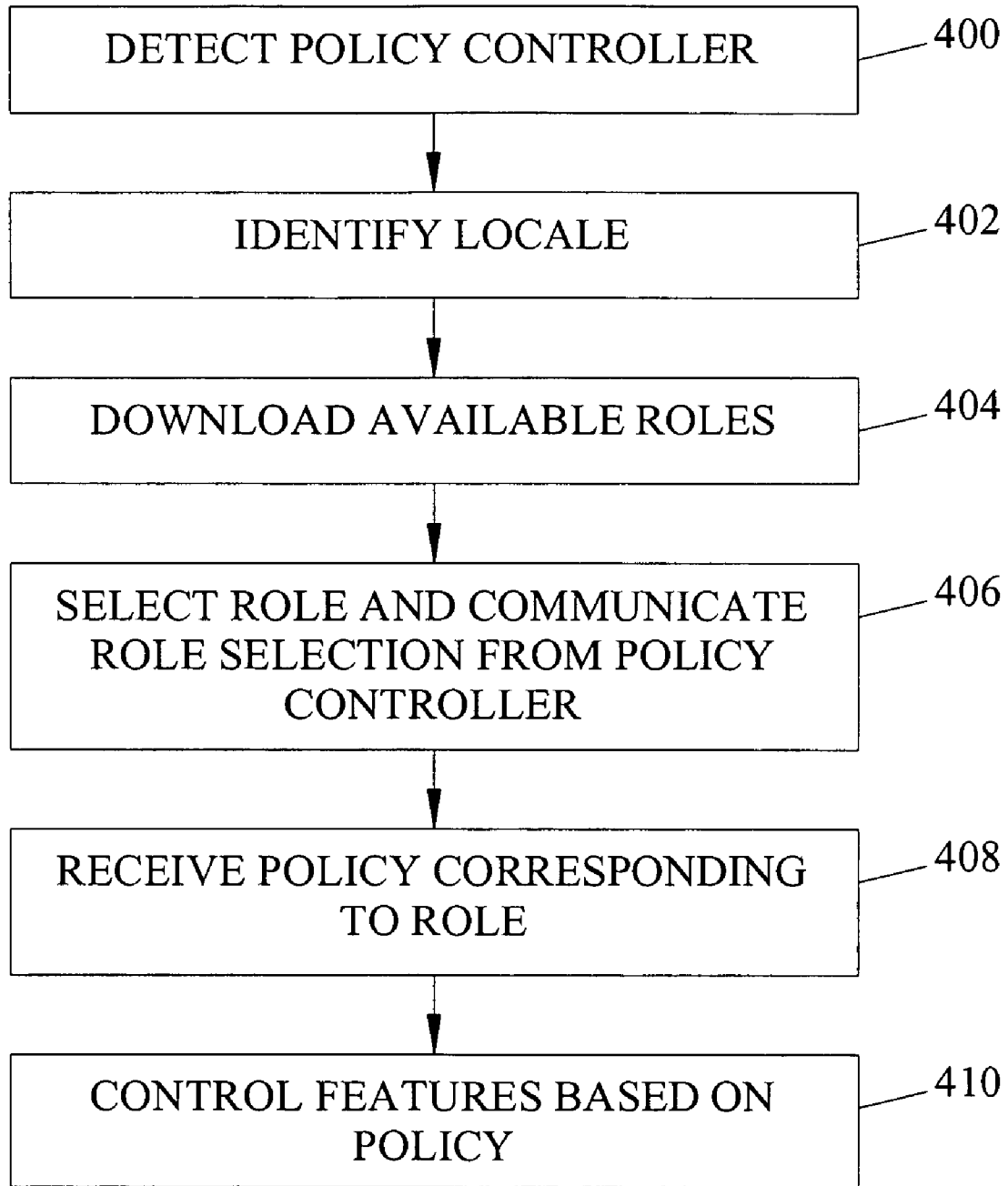


FIG.4A

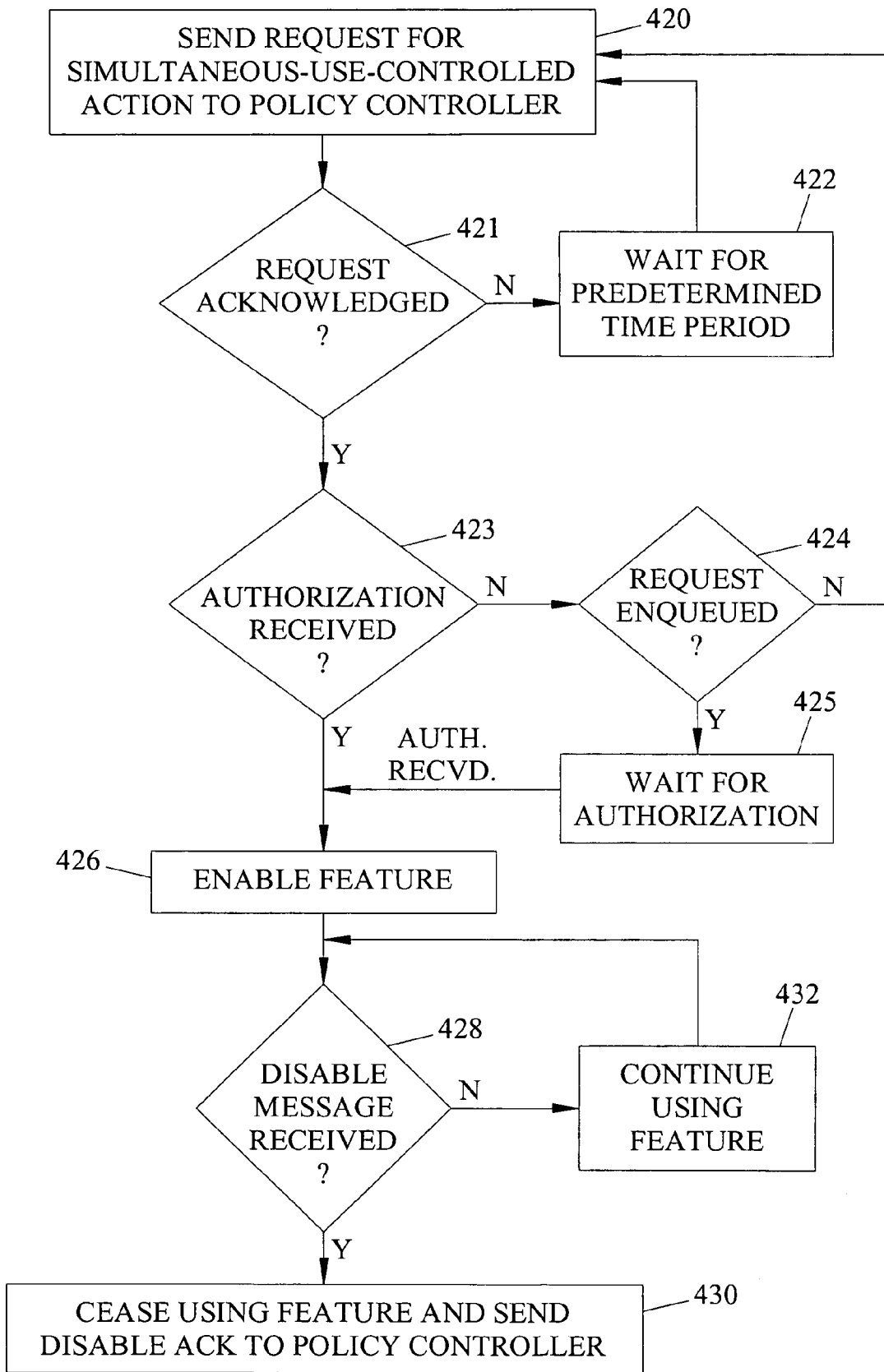


FIG.4B

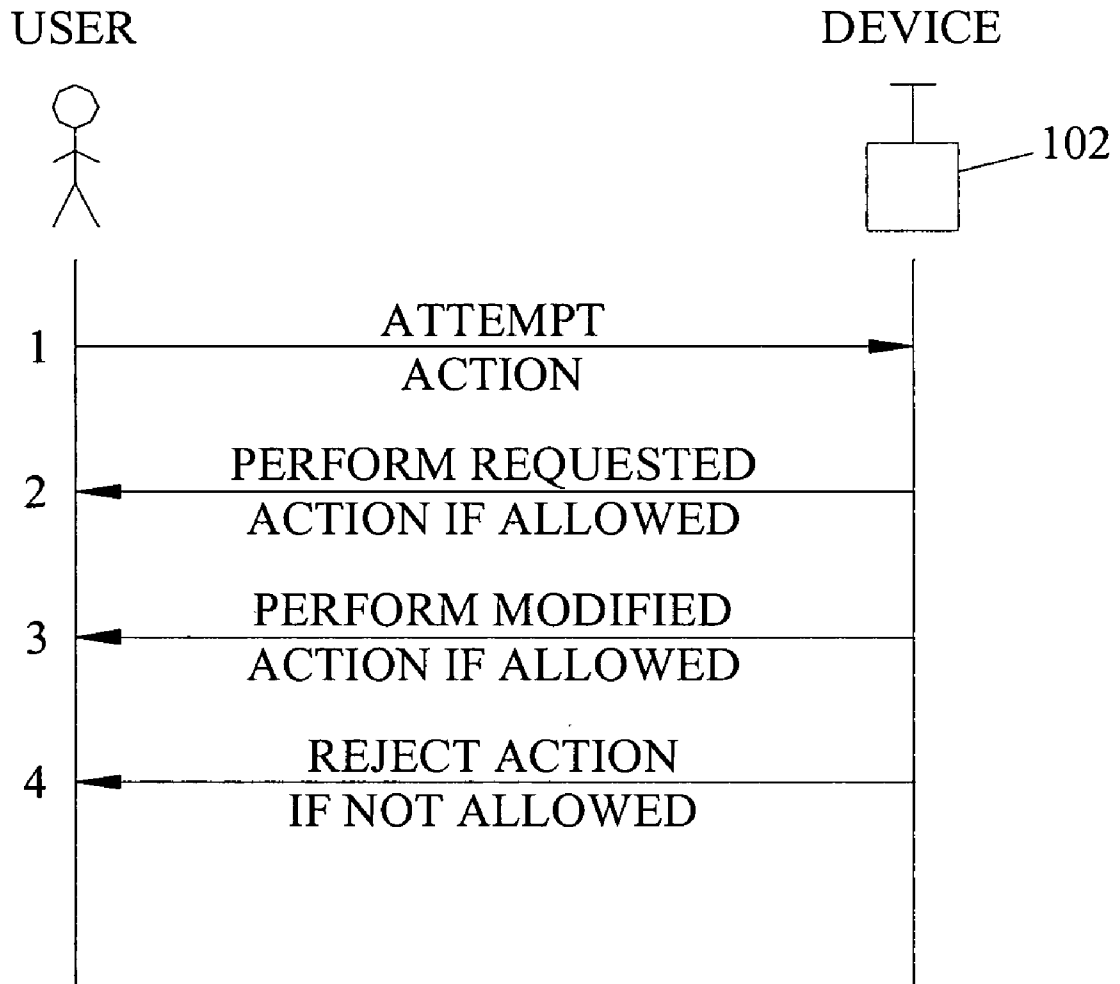


FIG. 5

1

**METHODS, SYSTEMS, AND COMPUTER  
PROGRAM PRODUCTS FOR ROLE- AND  
LOCALE-BASED MOBILE USER DEVICE  
FEATURE CONTROL**

TECHNICAL FIELD

The subject matter described herein relates to controlling one or more features of a mobile user device, such as a mobile phone and/or a digital camera. More particularly, the subject matter described herein relates to methods, systems, and computer program products for role- and locale-based mobile user device feature control.

BACKGROUND

Mobile user devices, such as mobile telephones, mobile telephones that incorporate digital cameras, digital cameras with mobile telephone capabilities and digital cameras without corresponding mobile telephone capabilities, include a variety of features or functions that it may be desirable to control based on the role of a user of such a device and the locale in which the device is being used. For example, with regard to mobile telephones, it may be desirable to control ring volume, call duration, or other features based on the role of a user and the locale in which the device and user are positioned. With regard to digital cameras, in some locales, it may be desirable to control a camera's ability to flash or the duration allowed for recording video clips.

There are a variety of problems associated with controlling features of mobile user devices. One problem is that the user may not know of device usage policies particular to the user's role or the locale in which the device is being used. For example, in a museum, a user may not know the specific areas in which flash photography is permitted or prohibited. In another example, in some social settings, a user may not know whether pictures or mobile phone calls are acceptable.

Another problem associated with controlling features of a mobile user device is that a user may not know how to program the device to implement the policies of the user's role and locale. For example, mobile phones and digital cameras include vast menus of options. The user may not know how to navigate the menus and/or to control the options. In addition, even assuming that the user knows how to control the options of his or her device, the user may forget to reactivate disabled features when the user leaves a particular locale.

In light of these difficulties associated with controlling mobile user devices, methods have been developed for disabling functions of mobile user devices based on locale. For example, transmitters have been placed in restaurants to disable mobile phones. Such devices typically rely on a disable signal being sent to all devices within a particular area. One problem with such devices is that all user devices are treated the same, regardless of the role of the user. For example, in an office environment, it may be desirable to allow customers to make phone calls but to disable mobile communications capabilities for employees. A disabling device that treats all devices the same regardless of the user's role does not allow such exceptions.

Other user device feature control methods require specialized user equipment and action on the part of the user to comply with the policy. For example, one conventional method for controlling digital cameras requires that the camera have a card reader and requires that the user swipe a smart card through the card reader to disable camera features. Requiring specialized equipment and user action to comply with device usage policies decreases the likelihood that com-

2

pliance will be achieved. Yet another problem with these conventional approaches is that finer grain control than disabling all devices or an entire feature of all devices is needed.

Accordingly, there exists a need for improved methods, systems, and computer program products for role- and locale-based mobile user device feature control.

DISCLOSURE

According to one aspect, the subject matter described herein includes a method for controlling at least one feature of a mobile user device based on a locale and a role of a user of the mobile user device. The method includes storing, in a database, role information defining a plurality of different roles assigned to different user types and corresponding locale-based mobile user device feature control policies. When the mobile user device is within a locale, the role of a user of the mobile user device is determined. A locale-based mobile device feature control policy corresponding to the role of the user is selected from the database. At least one feature of the mobile user device is controlled based on the locale-based feature control policy.

According to another aspect, the subject matter described herein includes a method for implementing role- and locale-based user device feature control at a user device. The method includes receiving information identifying a plurality of user roles. A role selection is communicated to a policy controller. A policy corresponding to the selected role is received from the policy controller. At least one feature of the mobile user device is controlled based on the policy.

According to yet another aspect, the subject matter described herein includes a method for applying different feature control policies to different user devices in the same locale. The method includes automatically communicating a first role- and locale-based feature control policy to a first mobile user device based on a role assigned to a first user. A second role- and locale-based feature control policy is automatically communicated to a second user device based on a role of a second user. The first and second user devices are controlled using the first and second policies, which are different from each other.

According to yet another aspect, the subject matter described herein includes a method for implementing role- and locale-based mobile user device feature control at a role- and locale-based policy controller. The method includes, at the policy controller, receiving role requests from mobile user devices. Policies corresponding to the role requests are determined. The policies are communicated to the user devices.

According to yet another aspect, the subject matter described herein includes a system for role- and locale-based user device feature control. The system includes a mobile user device feature control policy database for storing locale-based mobile user device feature control policies and corresponding mobile user roles. A role- and locale-based policy controller determines a role of a user of a mobile device, extracts a corresponding policy from the database, and communicates the policy to the mobile user device.

According to yet another aspect, the subject matter described herein includes a user device for implementing role- and locale-based feature control. The user device includes a feature control client for obtaining information identifying a plurality of user roles, for communicating a selected role to a policy controller and for obtaining a user device feature control policy corresponding to the selected role. The user device also includes a feature controller for controlling at least one feature of the device based on the user device feature control policy.

The subject matter described herein may be implemented using a computer program product comprising computer executable instructions embodied in a computer readable medium. Exemplary computer readable media suitable for implementing the subject matter described herein include chip memory devices, disk storage devices, programmable logic devices, and application specific integrated circuits. In addition, the computer readable medium used to implement the subject matter described herein may be located on a single device or computing platform or may be distributed across a plurality of devices or computing platforms.

#### BRIEF DESCRIPTION OF THE DRAWINGS

Preferred embodiments of the subject matter described herein will now be explained with reference to the accompanying drawings of which:

FIG. 1 is a block diagram illustrating a system for role- and locale-based mobile user device feature control according to an embodiment of the subject matter described herein;

FIG. 2A is a flow chart illustrating an exemplary process for controlling a feature of a mobile user device based on a locale of the user device and a role assigned to the mobile user device user according to an embodiment of the subject matter described herein;

FIG. 2B is a flow chart illustrating an exemplary process for applying different mobile user device feature control policies to different mobile user devices in the same locale based on different user roles according to an embodiment of the subject matter described herein;

FIG. 3A is a flow chart illustrating an exemplary process that may be performed by a role- and locale-based policy controller in controlling a feature of a mobile user device according to an embodiment of the subject described herein;

FIG. 3B is a flow chart illustrating an exemplary process that may be performed by a role- and locale-based policy controller in controlling the number of devices simultaneously activating the same feature according to an embodiment of the subject matter described herein;

FIG. 3C is a flow chart illustrating an exemplary process that may be performed by a policy controller in limiting use duration of a simultaneous-use-controlled feature of a user device according to an embodiment of the subject matter described herein;

FIG. 4A is a flow chart illustrating an exemplary process that may be performed at a mobile user device in implementing role- and locale-based feature control according to an embodiment of the subject matter described herein;

FIG. 4B is a flow chart illustrating an exemplary process that may be performed at a mobile user device in requesting activation of a feature whose simultaneous use by different users is limited according to an embodiment of the subject matter described herein; and

FIG. 5 is a flow diagram illustrating exemplary interaction between a user and a mobile user device that implements role- and locale-based feature control according to an embodiment of the subject matter described herein.

#### DETAILED DESCRIPTION

FIG. 1 illustrates a system for role- and locale-based feature control of a user device according to an embodiment of the subject matter described herein. Referring to FIG. 1, the system includes means for storing, in a database, role information identifying a plurality of roles and corresponding locale-based mobile user device feature control policies. For example, the system includes a role- and locale-based policy

controller **100** for storing role- and locale-based user device feature control policies and communicating the policies to mobile user devices **102**. The system may also include means for determining a role of a mobile device user. For example, users may manually select roles via their user devices and communicate the selected roles to policy controller **100**. Alternatively, policy controller **100** may receive authentication information from users via their respective user devices **102** from which policy controller **100** may derive role information. The system may further include means for selecting, from a database, a locale-based mobile user device feature control policy. For example, policy controller **100** may select policies from database **112** (described below) based on a role identified for a user. The system may further include means for controlling a feature of a user device based on the locale-based feature control policy. For example, each user device **102** may control one or more of its features based on a policy received from policy controller **100**.

Policy controller **100** may receive policies from an administrator via administrator terminal **104**. In the illustrated example, role- and locale-based policy controller **100** includes an admin interface **106** for interfacing with an administrator terminal **104**, a mobile user device interface **108** for interfacing with mobile user devices **102**, a mobile user device feature control policy database **110** for storing mobile user device feature control policies, and a simultaneous feature usage control database **112** for storing data relating to simultaneous-use-controlled features. Admin interface **106** may be any suitable interface for communicating with another terminal via a network using any suitable protocol. In one exemplary embodiment, admin interface **106** may be a web interface. Mobile user device interface **108** may be any suitable interface for communicating with mobile user devices over a wireless communications link. For example, mobile user device interface **108** may be a wireless LAN (WLAN) interface, a code division multiple access (CDMA) wireless interface, time division multiple access (TDMA) wireless interface, a frequency division multiple access (FDMA) wireless interface, or a Bluetooth wireless interface. Mobile user device policy control database **110** stores locale-based policies that are indexed by user roles. Exemplary locales and roles for which policies may be defined include the following:

- 1) Enterprises where employees are trusted but may not realize which set of rules apply regarding device usage or may make inadvertent mistakes due to the complexity of the rules involved. For example, if mobile device **102** is a phone, the ring volume may be set too high for an office or too low for a cafeteria. Alternatively, during the CEO's presentation in an all hands meeting or during a customer visit, a phone ringing or buzzing may be acceptable if the call relates to a childcare emergency or a customer, but not otherwise. Database **110** may store ring volumes corresponding to each locale and role so that the ring volume can be set appropriately based on locale and role.
- 2) Social settings, such as museums, concert halls, or churches, where people may be embarrassed by non-compliance with mobile user device feature control policies and would greatly appreciate help in ensuring that their behavior complies with the expected standard. For example, if ringers or flashers are prohibited, most people may not desire to break the rules. Alternatively, people may forget that rules apply or how to comply with them due to the complexity of settings needed on their devices. In a museum, for instance, pictures may be permitted in a lobby, on a roof, or a balcony, permitted

5

without flash in most rooms and prohibited where some special objects, such as light-sensitive paintings or other special artifacts, are kept. A duly authorized media organization photographer may be allowed to take pictures in some rooms, however, even if museum visitors are not. In order to implement such feature control, database 110 may store policies that allow camera flashes to be used in certain sub-areas within a locale but not in others and by users having certain roles, but not by other users.

- 3) Public settings, such as airports and train stations, where most people comply with user device feature control rules but may mistakenly fail to comply with some rules. In some such places, taking pictures or taking high-resolution pictures is not allowed for security reasons. Taking pictures looking out a plane or train window is generally allowed when the plane in question is no longer parked at an airport or train station. In order to control mobile user device features in such locales, database 110 may store policies that limit camera resolution or that limit all photographs within a predetermined distance of an airport terminal.
- 4) Tourist settings, such as bridges and scenic overlooks. Pictures are often forbidden in certain such settings, especially close to major bridges or some national monuments. However, pictures may be allowed in other such settings. In order to control mobile user device features in locales in which photography is limited, database 110 may store policies that limit photography within a predetermined distance of the object or by predetermined user types.
- 5) Educational institutions, such as schools and universities, where it is often essential for students to make and receive calls and send and receive instant messages. However, there are times when such actions cannot be permitted (e.g., during class or during exams). There are times when such actions can be permitted (e.g., during lunch or after school or in a pick up and drop off area). Also, the roles of teacher, student, and visiting parent may be used to determine who can make calls, take pictures, or make the video recordings. In order to implement such feature control, database 110 store policies for different areas and user types within an educational locale.

For each locale, policies may be indexed according to role. For example, if the location is a company, exemplary roles may be employee, guest, customer, and administrator. If the locale is an educational institution, the roles may be student, guest, faculty member, etc. Each role may be associated with a different user based policy for the locale. For example, if device 102 is a digital camera and the locale is a museum, guests may be given non-flash-photography privileges, while members of a media organization and museum employees may be given flash photography privileges. Dividing policies within a locale based on user roles enhances the utility of mobile user devices over such utility in locales where conventional feature control measures that block features for users regardless of the user type are utilized.

Table 1 shown below illustrates exemplary data that may be stored in database 110 for cameras and mobile phones.

6

TABLE 1

Role- and Local-based Mobile User Device Feature Control Policies			
Locale	Sub-Area	Role	Policy
museum	painting gallery	guest	no flash photography
		authorized media member	flash photography allowed
	lobby	any	flash photography allowed
corporation	conference room	employee	ringer set on vibrate
		customer	maintain default settings
	cafeteria	any	increase ring volume
educational institution	classroom	student	no communications during tests
		teacher	silent communications enabled during tests
	common areas	any	all communications enabled

It should be noted that in Table 1, policies for different locales are included. However, at any given locale, database 110 may only be populated with roles and corresponding policies specific to the locale. Alternatively, database 110 may store a set of default policies for a plurality of different locales. When a policy controller is activated in a given locale, the administrator may enable policies that apply to the particular locale, while leaving the remaining policies disabled. In addition, the administrator may create new policies and modify the default policies using admin interface 106.

Simultaneous feature usage control database 112 stores data regarding the number of users that are simultaneously using a given feature and pending requests to use the feature that have not been granted. Some features, even though allowed for a given locale and user role, may require permission from policy controller 100 for activation to limit the number of users simultaneously activating the same feature in the locale. For example, if user device 102 is a camera, it may be desirable to limit the number of simultaneous video recordings being made, even though video recording is allowed for a particular user role and locale. In order to implement such a feature, simultaneous feature usage control database 112 tracks the number of users activating a feature. If at any given time the number of feature activation requests meets or exceeds the allowed number of requests, new requests may be denied and stored in database 112 until the requests can be granted. Once a request is granted, the usage count for a given feature may be incremented and any pending request data for that request may be removed.

Table 2 shown below illustrates exemplary request data that may be stored in database 112 to control the number of users that are simultaneously activating a particular feature.

TABLE 2

Simultaneous User Feature Control Data				
Feature ID	Max Simultaneous Users	Current User Count	Current User ID/ Feature Activation Time	Pending Request Data
Video recording	10	10	User1@isp.com/09:00.15 User2@isp.com/09:00.43 User3@isp.com/09:00.50 User4@isp.com/09:00.55 User5@isp.com/09:02.11 User6@isp.com/09:02.32 User7@isp.com/09:03.05 User8@isp.com/09:04.11 User9@isp.com/09:04.17 User10@isp.com/09:05.03	User11@isp.com

The data contained in Table 2 includes the feature ID, the number of current users, the maximum number of simultaneous users allowed, the IDs and feature activation times of current users, and the IDs of requesting users. In the illustrated example, there are 10 current users, the maximum number of simultaneous users allowed is 10, and there is one user waiting to use the feature. In some implementations, it may be desirable to limit the duration of usage by current users to prevent the current users from monopolizing a feature when others are waiting. Storing the user ID and feature activation time allows policy controller 100 to disable a feature being used by one user by sending a disable message to the user when the feature has been activated for the maximum allowed time period. Once the feature is disabled for one user, that user's ID may be removed from the table, the current user count may be decremented, and the pending user may be sent an enable message. The pending user's ID would then be moved to the current users field.

Mobile user devices 102 may be any mobile user devices with one or more features that it is desirable to control. Examples of mobile user devices 102 include digital cameras, mobile telephones, mobile telephones with digital camera features, digital cameras with mobile telephone features, etc. In the example illustrated in FIG. 1, each mobile user device 102 includes a feature control client 114 for communicating with role- and locale-based policy controller 100 and a feature controller 116 for controlling at least one feature of user device 102 using policies obtained by client 114. Feature control clients 114 may use any suitable protocol for communicating with locale and roll based feature controller. Exemplary protocols may include WLAN protocols, Bluetooth protocols, CDMA, TDMA, or FDMA air interface protocols, etc. In one exemplary implementation, feature control clients 114 may obtain information identifying a plurality of user roles and communicate a selected role to policy controller 100. Feature control clients 114 may also obtain a user device feature control policy corresponding to the selected role from policy controller 100.

Feature controllers 116 may read policy information obtained by clients 114 and control features of mobile user devices 102. Exemplary features that may be controlled include calling ability, ring volume, camera flash ability, flash intensity, etc.

FIG. 2A is a flow chart illustrating an exemplary process for implementing role- and locale-based mobile user device feature control according to an embodiment of the subject matter described herein. Referring to FIG. 2A, in block 200, role information defining different roles for different user

types and corresponding locale-based mobile user device feature control policies are stored in policy database 110. The action in block 200 may be performed at provisioning time before a user device enters a locale. The actions in blocks 202-206 may be performed after or in response to a user device entering a locale. Referring to block 202, the role of the mobile user device is determined. The role may be determined by communication between user device 102 and policy controller 100. Details of exemplary communication methods that may be used will be described below. In block 204, policy controller 100 selects, from a database, a locale-based feature control policy corresponding to the role. This role or a plurality of roles and a plurality of policies may be communicated to user device 102. In block 206, at least one feature of the device is controlled based on the policy. In one exemplary implementation, a user may be presented with a plurality of roles and corresponding policies and the user may select one of the roles and corresponding policies. In an alternate implementation, the role and policy may be selected automatically, for example, based on authentication parameters, such as a smart card or a user ID and password, supplied by the user.

Because feature control policies are individually negotiated with each mobile user device and mobile user, different feature control policies can be applied to different users within the same locale. FIG. 2B is a flow chart illustrating an exemplary process of applying different policies for different mobile user devices within the same locale based on the locale and role of each user. Referring to FIG. 2B, in step 220, policy controller 100 automatically communicates a first role- and locale-based feature control policy to a first mobile user device based on a locale of a first user. Automatically communicating a policy to a user device may include sending the policy to the user device over an air interface in response to identifying the user's role. If the user's role is not identified, a default policy may be automatically communicated to the user device. User-compliance actions, such as swiping a smart card in the user device to receive the policy are not required.

In block 222, policy controller 100 automatically communicates a second role- and locale-based feature control policy to a second mobile user device based on a role and locale of the second user. In block 224, the user devices control their respective operation based on the first and second policies. If the locale of the first and second user devices is the same and the role of the first and second users is different, the first and second policies may be different. Thus, the subject matter described herein allows different role- and locale-based feature control policies to be used for different user devices within the same locale.

It should be noted that the subject matter described herein is not limited to applying different policies to different user devices in the same locale. If the two users have the same role, the users may be assigned the same policy. In addition, if the two users have different roles, but the same policy is associated with the different roles, the same policies may be applied to both user devices. It should also be noted that any of the methods described herein can be repeated to determine the policy to apply to any number of user devices.

FIG. 3A is a flow chart illustrating an exemplary process that may be performed by policy controller 100 in implementing role- and locale-based mobile user device feature control according to an embodiment of the subject matter described herein. Referring to FIG. 3A, in block 300, policy controller 100 continually broadcasts a locale identifier. For example, the locale identifier may be repeatedly broadcast at administrator-specified intervals. It should be noted that the action in block 300 is optional, and, in an alternate implementation, it

is not required that the mobile user device be informed of the locale in which it is operating. In block 302, policy controller 100 receives and processes policy requests from user devices. In block 304, policy controller 100 sends available roles to the user device.

Once the user device receives the available roles, the user device may select an available role, either automatically or based on a user selection. In block 306, policy controller 100 determines whether a role selection has been received. If a role selection has been received, control proceeds to block 308 where policy controller 100 communicates a policy corresponding to the selected role to the user device. In block 306, if a role selection is not received within a predetermined time period, policy controller 100 may communicate a default policy to the user device in block 310. In one exemplary implementation, the default policy may be the policy corresponding to the most restrictive user role.

As stated above, another aspect of policy controller 100 may include controlling the number of users allowed to simultaneously use a given feature within a locale, even when the feature is allowed for the user's role within the locale. FIG. 3B illustrates an exemplary process that may be implemented by policy controller 100 in limiting the number of users that can simultaneously use a given feature. Referring to FIG. 3B, in block 320, policy controller 100 receives a request to activate a feature whose simultaneous use is controlled. In block 322, policy controller 100 accesses simultaneous feature usage control database 112. In block 324, policy controller 100 determines whether allowing the requesting device to use the feature would cause the simultaneous use threshold to be met or exceeded. If the threshold would not be met or exceeded, control proceeds to block 326 where policy controller 100 communicates authorization to use the feature to the user device.

In block 328, policy controller 100 receives a feature activation acknowledgement message from the user device. Control then proceeds to block 330 where policy controller 100 increments the simultaneous use count in database 112. In block 332, policy controller 100 adds the user ID and feature activation time to the current use data in database 112. In step 328, if no feature authorization acknowledgement is received, policy controller 100 does not add the user ID and feature activation time to current use data in database 112. An unacknowledged feature activation may occur when a feature is authorized for a user device, and then the user device goes out of range or becomes disabled before the activation is received and/or acknowledged. In this scenario, it is desirable that the disabled or out-of-range user device not prevent other user devices from using the feature. By refraining from storing the disabled user's data as a current user, resources will be preserved for future users.

Returning to block 324, if the current feature activation request would cause the current usage threshold to be met or exceeded, control proceeds to block 334 where policy controller 100 acknowledges the request and informs the user that the requested action is not allowed at this time. Control then proceeds to block 336 where policy controller 100 stores pending request data in database 112.

Once the maximum number of users for a given feature is achieved and pending request data is stored in database 112 indicating that requestors are waiting to use the feature, it may be desirable to limit the duration that current users can use the feature so that pending requestors can access the feature. FIG. 3C illustrates an exemplary process that may be performed by policy controller 100 in limiting the duration of feature use by existing feature users so that pending requestors will eventually be allowed to access the feature. Referring to FIG. 3C, in

block 350, policy controller 100 monitors the usage time of each current user. In block 352 it is determined whether the maximum usage time for a given user has been met or exceeded. If the maximum usage time has not been met or exceeded, control returns to block 350 where policy controller 350 continually monitors the usage time for each user. For example, the entries in database 112 may be checked at administrator-defined intervals to determine whether the usage time for any of the users meets or exceeds a maximum usage time.

If the maximum usage time for a user has been met or exceeded, control proceeds to block 354 where a feature disable message is sent to a user device. In block 356, policy controller 100 receives a feature disable acknowledgement message from the user device. In block 358, policy controller 100 removes user device data from the current user data in database 112. Control then proceeds to block 360 where policy controller 100 activates the feature for a pending requestor. Activating the feature for a pending requestor may include sending a feature activation message to the user device of the pending requestor, receiving a feature activation acknowledgement message, moving the user device data from the pending request field in database 112 to the current user field in database 112, and storing the feature activation time in database 112. Thus, using the process illustrated in FIGS. 3B and 3C, policy controller 100 can control the number of devices that simultaneously use a given feature.

The process of FIG. 3C may be performed any time it is desirable to limit feature usage time by pending users. For example, it may be desirable to continually execute the process illustrated in FIG. 3C when there are zero or more pending requestors in database 112. Executing the process illustrated in FIG. 3C when there are zero pending requestors places an absolute limit on each user's usage time, which may be desirable for some features, such as video recording time. Executing the steps illustrated in FIG. 3C when pending requestors are present in database 112 places a finite limit on feature activation wait time.

In order to prevent users who are out of range from blocking requesting users, a procedure may be implemented to remove such users from database 112. Such a procedure may include continually monitoring heartbeat messages received from user devices. If a user device listed as a current user in database 112 fails to send a heartbeat message within a predetermined time period, the user device may be disabled or out of range. Accordingly, the policy controller may remove the user device from the current user data in database 112. In addition or in the alternative, the policy controller may add a feature deactivation time to the pending user's data to indicate that the feature has been deactivated for the pending user.

It may also be desirable to allow current users to manually discontinue using a feature and allow other users to use the feature before the maximum usage time elapses. In order to implement these capabilities, a user device may send a feature disable request message to the policy controller. In response to the feature disable request message, the policy controller may remove the requesting user from the current user data in database 112. The policy controller may also acknowledge the request to confirm with the user device that the request has been disabled. Any time a current user is removed from database 112 the feature may be enabled for a pending requestor. It should also be noted that a user device may send a feature disable request message in response to a feature activation message before the user device initiates activation of a particular feature.

FIG. 4A is a flow chart illustrating an exemplary process that may be performed by a user device 102 in implementing



role- and locale-based feature control. Referring to FIG. 4A, in block 400, a user device detects a policy controller. This action may be performed by monitoring the air interface for locale ID broadcasts by policy controllers. Once a policy controller is detected, in block 402, the user device identifies the locale. As stated above, this action is optional. In block 404, the user device downloads available roles. In block 406, the user device selects one of the available roles and communicates the selected role to the policy controller. In block 408, the user device receives a policy corresponding to the role. In block 410, the user device controls its features based on the received policy.

FIG. 4B illustrates an exemplary process that may be performed by a user device in controlling activation of a feature for which policy controller 100 implements a simultaneous usage limit. Referring to FIG. 4B, in block 420, the user device sends a request to policy controller 100 for activating a feature for which the number of simultaneous users is controlled. In block 421 it is determined whether the request has been acknowledged. If the request has been not been acknowledged, control proceeds to block 422 where the user device waits for a predetermined time period and resends the request. If the request has been acknowledged, control proceeds to block 423 where the user device determines whether authorization has been received. If the authorization has not been received, control proceeds to block 424 where the user device determines whether the request has been enqueued for later granting due to the number of current simultaneous users. As illustrated above in Table 2, pending user data may be stored for users who have requested a feature but for whom the requests have not been granted. The policy controller may inform the user device that a request is pending and has been enqueued by sending a message to the user device. If such a message is received, the user device may wait for an authorization to be received for the pending request (block 425). If an authorization or a message indicating that a request has been enqueued is not received within a predetermined time period, control returns to block 420 where the user device resends the feature activation request.

In block 423 or block 425, if an authorization is received, control proceeds to block 426 where the user device enables the feature. Once the feature is enabled, the user may use the feature until a disable message is received. As described above with regard to FIG. 3C, policy controller 100 may send a disable message when the maximum number of users is currently using a feature, at least one pending request is present in database 112, and a current user's usage time exceeds an allowed limit. In block 428, the user device determines whether a feature disable message has been received. If a feature disable message has been received, control proceeds to block 430 where the user device disables the feature and sends a feature disable acknowledgement message to policy controller 100. In block 428, if a feature disable message has not been received, control proceeds to block 432 where the user continues using the feature. Control then returns to block 428 where the user device listens for feature disable messages. Thus, using the process illustrated in FIG. 4B, a user device can be controlled to limit simultaneous feature use.

Controlling user device features based on a locale-based policy may include allowing or blocking a feature, or modifying a feature. FIG. 5 is a flow diagram illustrating exemplary action attempts by a user and corresponding device control actions that may be performed by a user device 102. Referring to FIG. 5, in line one, the user attempts an action. Based on the policy, device 102 may perform one of three actions. For example, in line two, device 102 performs the action if it is allowed. In line three, device 102 performs a

modified action if it is allowed. In line four, user device 102 rejects the action if it is not allowed.

#### Enhancements

One potential enhancement to the methods and systems described above may include an override mechanism. For example, a user may have an override option on his or her user device to override a policy control. In emergency situations, it may be desirable for a user to be allowed to activate a phone or a camera. Such an override mechanism may be initiated by user by selecting an override menu option. The override menu option may override the control that was initiated by the policy controller.

Although many locales have been described above, the subject matter described herein is not limited to the particular locales described above. For example, sub-locales may be specified within a given locale.

In addition to the feature control options described above, another option for controlling devices that include cameras may include quarantining photographs at a server managed by the administrator of the locale. The pictures may also be quarantined at servers controlled by the owner of a given camera device. Examples of picture quarantine methods and other methods that may be used in combination with the methods and systems described herein are described in commonly-assigned, co-pending U.S. patent application Ser. No. 10/949,282, filed Sep. 24, 2004, the disclosure of which is incorporated herein by reference in its entirety.

Yet another set of enhancements may include subtleties of the policies that an administrator may set for a given locale. These enhancements may include:

- 1) Allow fine-grained actions, such as allowing users to make calls that are shorter than sixty seconds or make video clips that are shorter than thirty seconds. Likewise, a policy may allow the use of a camera flash but a) only at a low brightness or b) only for a specified number of pictures.
- 2) Base policies not only on a role, but also on additional considerations, such as the number of concurrent users of a feature, as described above.
- 3) Require a pre-registration phase so that users can purchase rights to a more flexible role. This can be a source of revenue for locale administrators.

It will be understood that various details of the invention may be changed without departing from the scope of the invention. Furthermore, the foregoing description is for the purpose of illustration only, and not for the purpose of limitation, as the invention is defined by the claims as set forth hereinafter.

#### What is claimed is:

1. A method for controlling at least one feature of a mobile user device based on a locale and a role of a user of the mobile user device, the method comprising:
  - storing, in a database, role information identifying a plurality of different roles assigned to different user types and corresponding locale-based mobile user device feature control policies; and
  - in response to the mobile user device being within a locale:
    - receiving a user device role request from the mobile user device over an air interface;
    - sending available roles and corresponding policies to the mobile user device over the air interface;
    - determining a role of a user of the mobile user device based on whether a role selection is received from the mobile user device;

13

selecting, from the database, a locale-based mobile user device feature control policy corresponding to the role of the user; and

controlling at least one feature of the mobile user device based on the locale-based feature control policy, wherein controlling at least one feature of the mobile user device based on the locale-based mobile user device feature control policy includes providing the locale-based mobile user device feature control policy corresponding to the determined role to the mobile user device to be processed at the mobile user device for controlling at least one of the at least one feature of the mobile user device based on the user device feature control policy.

2. The method of claim 1 wherein storing role information defining roles for a plurality of different user types includes defining roles for employee and guest user types.

3. The method of claim 1 wherein determining a role of a user includes communicating a plurality of roles to the user and receiving a selection of a role from the plurality of roles from the user.

4. The method of claim 1 wherein determining a role of a user includes automatically selecting a role to be assigned to the user based on an authentication parameter supplied by the user.

5. The method of claim 1 wherein selecting a locale-based mobile user device feature control policy includes selecting a policy from a database external to the mobile user device.

6. The method of claim 1 wherein selecting a locale-based mobile user device feature control policy includes selecting a policy from a database internal to the mobile user device.

7. The method of claim 1 wherein controlling at least one feature includes receiving a request from the user for activation of a feature and determining whether to activate the feature based on a number of current users using the feature.

8. The method of claim 1 wherein the mobile user device comprises a mobile telephone.

9. The method of claim 1 wherein the mobile user device comprises a camera.

10. The method of claim 1 wherein the mobile user device comprises a combination of a mobile telephone and a camera.

11. A method for controlling at least one feature of a mobile user device based on a locale and a role of a user of the mobile user device, the method comprising:

storing, in a database, role information identifying a plurality of different roles assigned to different user types and corresponding locale-based mobile user device feature control policies;

in response to the mobile user device being within a locale: receiving a user device role request from the mobile user device over an air interface;

sending available roles and corresponding policies to the mobile user device over the air interface;

determining a role of a user of the mobile user device based on whether a role selection is received from the mobile user device;

selecting, from the database, a locale-based mobile user device feature control policy corresponding to the role of the user; and

controlling at least one feature of the mobile user device based on the locale-based feature control policy; and activating the feature in response to determining that activating the feature would not cause the number of current users to meet or exceed a maximum simultaneous use threshold.

14

12. A method for controlling at least one feature of a mobile user device based on a locale and a role of a user of the mobile user device, the method comprising:

storing, in a database, role information identifying a plurality of different roles assigned to different user types and corresponding locale-based mobile user device feature control policies;

in response to the mobile user device being within a locale: receiving a user device role request from the mobile user device over an air interface;

sending available roles and corresponding policies to the mobile user device over the air interface;

determining a role of a user of the mobile user device based on whether a role selection is received from the mobile user device;

selecting, from the database, a locale-based mobile user device feature control policy corresponding to the role of the user; and

controlling at least one feature of the mobile user device based on the locale-based feature control policy; and refusing to activate the feature in response to determining that activating the feature would cause a maximum simultaneous use threshold to be met or exceeded and storing pending user activation request data in a simultaneous feature use control database.

13. The method of claim 12 comprising:

monitoring usage time by current users of the feature;

determining whether the usage time of any of the current users meets or exceeds a maximum feature usage time; and

in response to determining that the usage time of any of the current users meets or exceeds the maximum feature usage time, disabling the feature for that user and enabling the feature for the requesting user.

14. A method for implementing role- and locale-based feature control policies at a mobile user device, the method comprising:

at a mobile user device:

in response to the mobile user device being within a locale,

sending a user device role request from the mobile user device over an air interface;

receiving available roles over the air interface;

selecting one of the roles;

sending a role selection indicating a selected role from the mobile user device over the air interface;

receiving a locale-based mobile user device feature control policy corresponding to the selected role; and

controlling a feature of the mobile user device by processing the locale-based mobile user device feature control policy.

15. The method of claim 14 wherein selecting a role includes automatically selecting a role based on a user authentication parameter.

16. The method of claim 14 wherein selecting a role includes selecting a role in response to a role selection input from a user.

17. The method of claim 14 wherein controlling a feature based on the user device feature control policy includes controlling at least one mobile phone feature based on the user device feature control policy.

18. The system of claim 14 wherein controlling a feature includes controlling at least one camera feature based on the mobile user device feature control policy.

## 15

19. The method of claim 14 comprising overriding the policy in response to receiving an override input from the user.

20. A method for implementing role- and locale-based feature control policies at a mobile user device, the method comprising:

at a mobile user device:

- sending a user device role request from the mobile user device over an air interface;
- receiving information identifying a plurality of user roles over the air interface;
- selecting one of the roles;
- sending a role selection indicating a selected role from the mobile user device over the air interface;
- receiving a user device feature control policy corresponding to the selected role;
- controlling a feature of the mobile user device based on the user device feature control policy; and
- controlling at least one feature based on the mobile user device feature control policy including requesting permission for activating a simultaneous-use-controlled feature and activating the feature in response to receiving the permission.

21. A method for applying different feature control policies to different user devices in the same locale, the method comprising:

- automatically communicating a first role- and locale-based feature control policy to a first mobile user device based on a role of a first user;
- automatically communicating a second role- and locale-based feature control policy to a second mobile user device based on a role of a second user; and
- controlling the first and second mobile user devices using the first and second policies, wherein the first policy is different from the second policy, wherein controlling the first and second mobile user devices using the first and second policies includes providing the first and second policies, respectively, to the first and second mobile user devices to be processed by the first and second mobile user devices for controlling at least one feature of the first and second mobile user devices based on the first and second policies, wherein a user device role request is received from the first and second mobile user devices over an air interface and available roles and corresponding policies are sent to the first and second mobile user devices over the air interface, each of the first role and the second role determined based on whether a role selection is received from the respective first and second mobile user devices.

22. A system for role- and locale-based user device feature control, the system comprising:

- a mobile user device feature control policy database for storing a plurality of different mobile user device feature control policies and corresponding mobile user roles; and
- a role- and locale-based policy controller for determining a role assigned to a user of a mobile user device based on whether a role selection is received from the mobile user device, for extracting a locale-based mobile user device feature control policy corresponding to the role from the database, and for communicating the locale-based mobile user device feature control policy to the mobile user device, wherein the locale-based mobile user device feature control policy is configured for processing at the mobile user device for controlling at least one feature of the mobile user device based on the communicated locale-based mobile user device feature control

## 16

policy, wherein the policy controller is configured to broadcast a locale identifier over an air interface, to receive a user device role request from the mobile user device over the air interface, and to send available roles and corresponding policies to the mobile user device over the air interface.

23. The system of claim 22 wherein the mobile user device feature control policy database is configured to store user device feature control policies for camera devices.

24. The system of claim 22 wherein the mobile user device feature control policy database is configured to store user device feature control policies for mobile communications devices.

25. The system of claim 22 wherein the policy controller configured to communicate the policy to the user device automatically without requiring intervention from the user.

26. The system of claim 22 wherein the policy controller is configured to communicate the policy to the user in response to a request from a user over an air interface.

27. A system for role- and locale-based user device feature control, the system comprising:

- a mobile user device feature control policy database for storing a plurality of different mobile user device feature control policies and corresponding mobile user roles; and

- a role- and locale-based policy controller for determining a role assigned to a user of a mobile user device based on whether a role selection is received from the mobile user device, for extracting a policy corresponding to the role from the database, and for communicating the policy to the mobile user device, wherein the policy controller is configured to broadcast a locale identifier over an air interface, to receive a user device role request from the mobile user device over the air interface, and to send available roles and corresponding policies to the mobile user device over the air interface.

28. A system for role- and locale-based user device feature control, the system comprising:

- a mobile user device feature control policy database for storing a plurality of different mobile user device feature control policies and corresponding mobile user roles; and

- a role- and locale-based policy controller for determining a role assigned to a user of a mobile user device based on whether a role selection is received from the mobile user device, for extracting a policy corresponding to the role from the database, and for communicating the policy to the mobile user device, wherein the policy controller is configured to:
  - monitor a number of users simultaneously using a simultaneous-use-limited feature;
  - receive a request from the mobile user device for activating the simultaneous-use-limited feature;
  - grant the request in response to determining that granting the request would not cause the number of users using the simultaneous-use-limited feature to meet or exceed a threshold; and
  - refuse to grant the request and storing pending request data in response to determining that granting the request would cause the number of users using the simultaneous-use-limited feature to meet or exceed the threshold;

- wherein the policy controller is configured to broadcast a locale identifier over an air interface, to receive a user device role request from the mobile user device over the

17

air interface, and to send available roles and corresponding policies to the mobile user device over the air interface.

29. The system of claim 28 wherein the policy controller is configured to:

monitor a use duration for current users of the simultaneous-use-limited feature; and

in response to determining that a use duration for one of the current users meets or exceeds a maximum feature usage time threshold, disable the feature for the current user and activate the feature for the user corresponding to the pending request data.

30. A mobile user device for implementing role- and locale-based feature control, the mobile user device comprising:

a feature control client in the mobile user device for obtaining information identifying a plurality of user roles, for communicating a selected role to a policy controller and for obtaining a locale-based mobile user device feature control policy corresponding to the selected role, wherein the feature control client is configured to send a user device role request from the user device over an air interface, to receive available roles and corresponding policies over the air interface, and to send the selected role to the policy controller over the air interface; and  
a feature controller in the mobile user device for controlling at least one feature of the mobile user device by processing the locale-based mobile user device feature control policy corresponding to the selected role.

31. The user device of claim 30 wherein the feature control client is configured to automatically obtain the information identifying the roles from the policy controller without intervention from the user.

32. The user device of claim 30 wherein the feature control client is configured to receive input from the user regarding selecting the selected role.

33. The user device of claim 30 wherein the feature controller is configured to override the user device feature control policy in response to an override request from a user.

34. A user device for implementing role- and locale-based feature control, the user device comprising:

a feature control client for obtaining information identifying a plurality of user roles, for communicating a

18

selected role to a policy controller and for obtaining a user device feature control policy corresponding to the selected role, wherein the feature control client is configured to send a user device role request from the user device over an air interface, to receive available roles and corresponding policies over the air interface and to send the selected role to the policy controller over the air interface; and

a feature controller for controlling at least one feature of the device based on the user device feature control policy, wherein the feature controller is configured to request permission for performing a simultaneous-use-controlled action and to perform the action in response to receiving the permission.

35. A system for controlling at least one feature of mobile user device based on a locale and a role of a user of the mobile user device, the system comprising:

means for storing, in a database, role information identifying a plurality of different roles assigned to different user types and corresponding locale-based mobile user device feature control policies;

means for determining a role of a user of the mobile user device based on whether a role selection is received from the mobile user device;

means for selecting, from the database, a locale-based mobile user device feature control policy corresponding to the role of the user; and

means for controlling at least one feature of the mobile user device based on the locale-based feature control policy, wherein controlling at least one feature of the mobile user device based on the locale-based mobile user device feature control policy includes providing the user device feature control policy corresponding to the determined role to the mobile user device to be processed at the mobile user device for controlling at least one of the at least one feature of the mobile user device based on the user device feature control policy, wherein the means for controlling is configured to broadcast a locale identifier over an air interface, to receive a user device role request from the mobile user device over the air interface, and to send available roles and corresponding policies to the mobile user device over the air interface.

\* \* \* \* \*

UNITED STATES PATENT AND TRADEMARK OFFICE  
**CERTIFICATE OF CORRECTION**

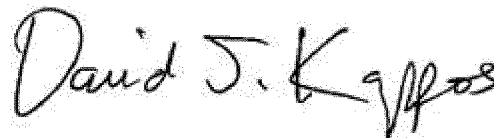
PATENT NO. : 8,145,241 B2  
APPLICATION NO. : 11/172595  
DATED : March 27, 2012  
INVENTOR(S) : Singh et al.

Page 1 of 1

It is certified that error appears in the above-identified patent and that said Letters Patent is hereby corrected as shown below:

In Column 14, Line 65, in Claim 18, delete "system" and insert -- method --, therefor.

Signed and Sealed this  
Eleventh Day of September, 2012

A handwritten signature in black ink that reads "David J. Kappos". The signature is written in a cursive, slightly slanted style.

David J. Kappos  
*Director of the United States Patent and Trademark Office*